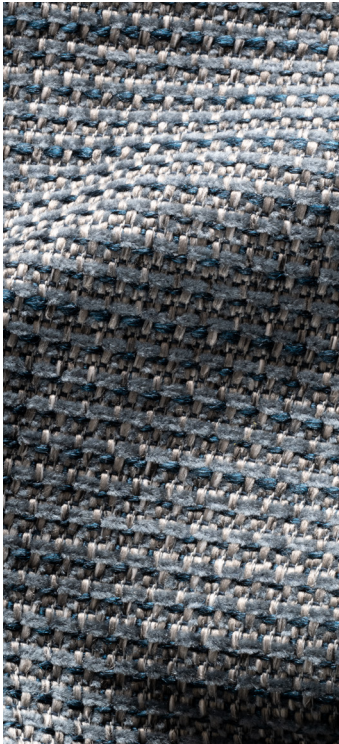
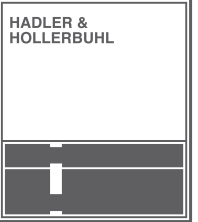


STRUCTURA

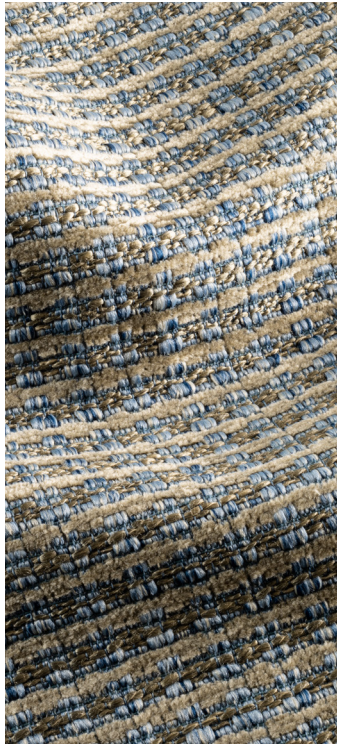
Wohlgefühl mit persönlicher Note



BASE



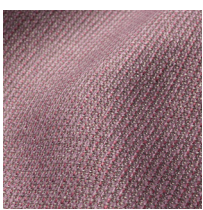
CLEAR



FLOOR



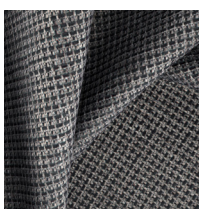
METRO



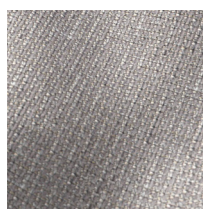
BASE 273 601
brombeer



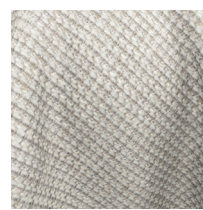
BASE 273 602
rot



BASE 273 603
schwarz



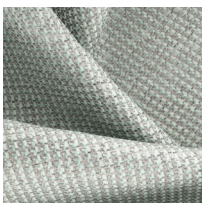
BASE 273 604
silber



BASE 273 605
graubeige



BASE 273 606
ecru



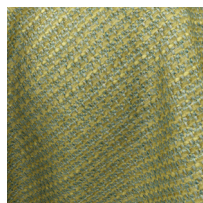
BASE 273 607
grüngrau



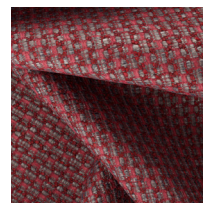
BASE 273 608
blau



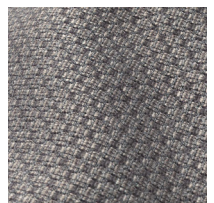
BASE 273 609
dunkelblau



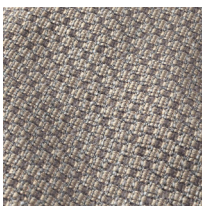
BASE 273 610
grün



CLEAR 273 611
rot



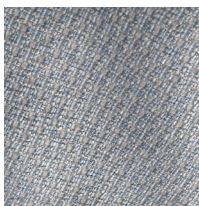
CLEAR 273 612
grau



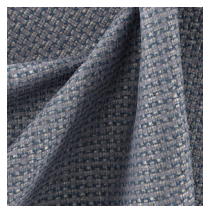
CLEAR 273 613
hellbraun



CLEAR 273 614
graubeige



CLEAR 273 615
blau



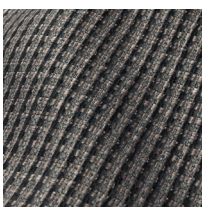
CLEAR 273 616
dunkelblau



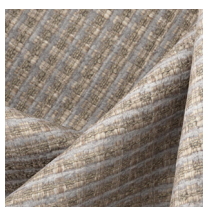
CLEAR 273 617
petrol



FLOOR 273 618
rosenholz



FLOOR 273 619
schwarz



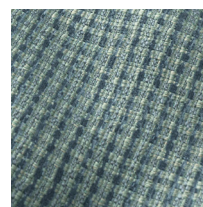
FLOOR 273 620
graubraun



FLOOR 273 621
graubeige



FLOOR 273 622
sand



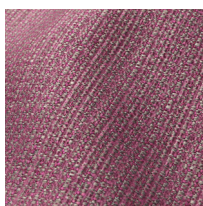
FLOOR 273 623
petrol



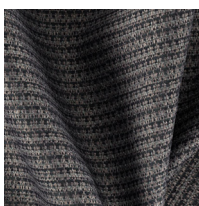
FLOOR 273 624
blau



FLOOR 273 625
grün



METRO 273 626
brombeer



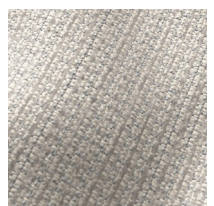
METRO 273 627
schwarz



METRO 273 628
grau



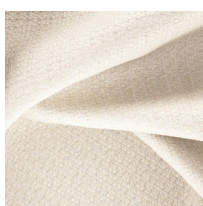
METRO 273 629
hellbraun



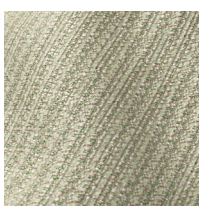
METRO 273 630
graubeige



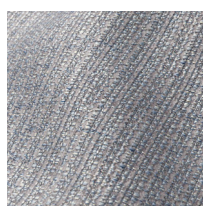
METRO 273 631
ecru



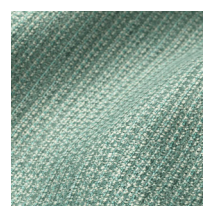
METRO 273 632
sand



METRO 273 633
schilfgrün



METRO 273 634
blau



METRO 273 635
grün

ARTIKEL	MATERIAL	ZUSATZ-NUTZEN	PFLEGE	SCHEUER-TOUREN	LICHT-ECHTHEIT	BREITE CM
BASE	63PES 35AC 2VI	FibreGuard		100.000	6	143
CLEAR	66PES 33AC 1VI	FibreGuard		40.000	6	143
FLOOR	64PES 34AC 2VI	FibreGuard		30.000	6	143
METRO	64PES 34AC 2VI	FibreGuard		70.000	6	143

Alle Artikel entsprechen **Oeko-Tex-Standard 100** und sind **schwer entflammbar nach BS 5852 - 0** (Zigarettentest).

Farbabweichungen vorbehalten. Stoffe vor Zuschchnitt auf Farbe und Ausfall prüfen.

Lichtechtheit: Skala 1-8 / 1 = sehr niedrige Lichtechtheit, 8 = sehr hohe Lichtechtheit

HINWEIS: Bei Chenillegeweben und Velours können im Gebrauch Sitzspiegel (Gebrauchslüster) entstehen. Dieses ist warentypisch, nicht vermeidbar und kein Reklamationsgrund. Möbelstoffe sind generell und auch nicht durch Fleckschutz vor Abfärbung durch Bekleidungstextilien (z. B. Jeans) und Gebrauchsverschmutzungen geschützt.