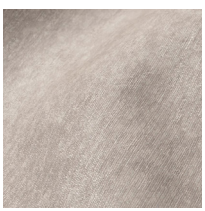
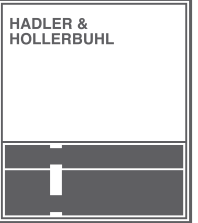
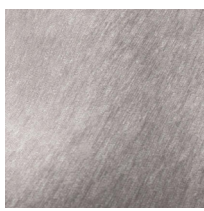


PHOENIX

Stilkone mit Gemütlichkeit



PHOENIX 272 901
beige-grau



PHOENIX 272 902
silber



PHOENIX 272 903
hellgrau



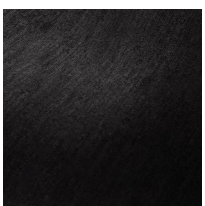
PHOENIX 272 904
grau



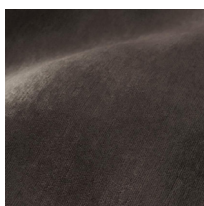
PHOENIX 272 905
braungrau



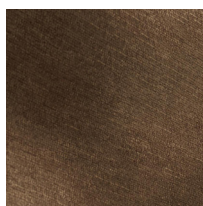
PHOENIX 272 906
anthrazit



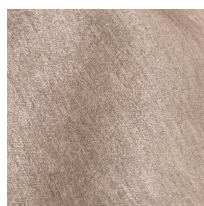
PHOENIX 272 907
schwarz



PHOENIX 272 908
dunkelbraun



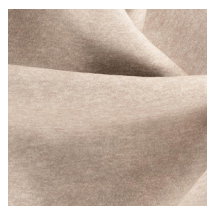
PHOENIX 272 909
braun



PHOENIX 272 910
hellbraun



PHOENIX 272 911
graubeige



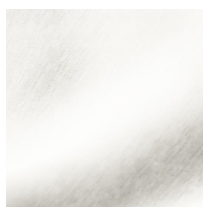
PHOENIX 272 912
beige



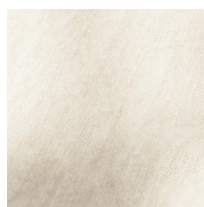
PHOENIX 272 913
wollweiss



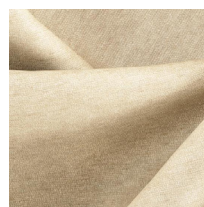
PHOENIX 272 914
weiss



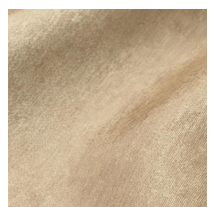
PHOENIX 272 915
ecru



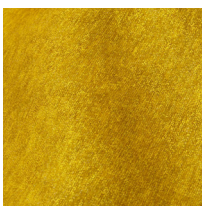
PHOENIX 272 916
creme



PHOENIX 272 917
sand



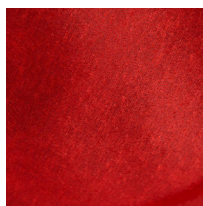
PHOENIX 272 918
camel



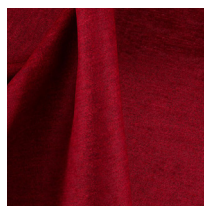
PHOENIX 272 919
gold



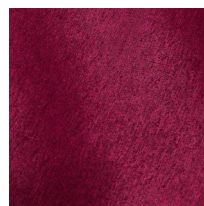
PHOENIX 272 920
kupfer



PHOENIX 272 921
rot



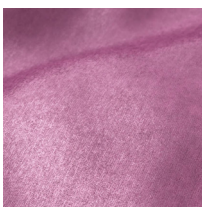
PHOENIX 272 922
dunkelrot



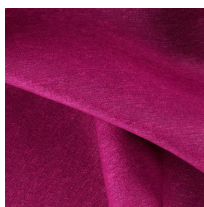
PHOENIX 272 923
brombeer



PHOENIX 272 924
lila



PHOENIX 272 925
pflaume



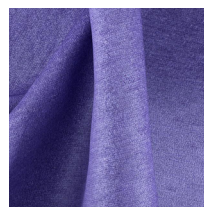
PHOENIX 272 926
pink



PHOENIX 272 927
rose



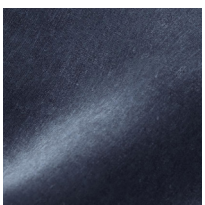
PHOENIX 272 928
flieder



PHOENIX 272 929
lilablau



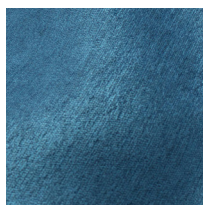
PHOENIX 272 930
marine



PHOENIX 272 931
blau



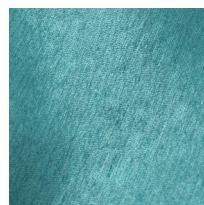
PHOENIX 272 932
hellblau



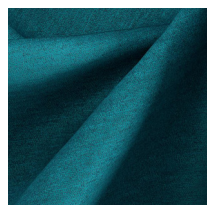
PHOENIX 272 933
ocean



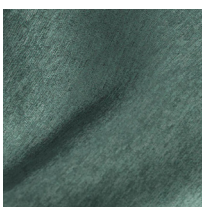
PHOENIX 272 934
eisblau



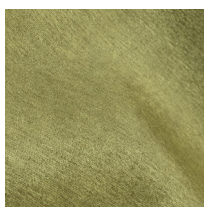
PHOENIX 272 935
jade



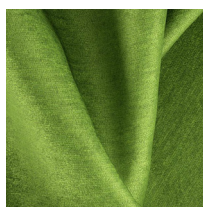
PHOENIX 272 936
petrol



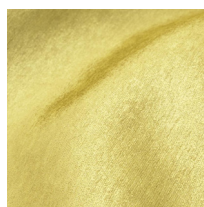
PHOENIX 272 937
waldgrün



PHOENIX 272 938
grün



PHOENIX 272 939
apfelgrün



PHOENIX 272 940
moss

ARTIKEL	MATERIAL	ZUSATZ-NUTZEN	PFLERGE	SCHEUER-TOUREN	LICHT-ECHTHEIT	BREITE CM
PHOENIX	54PES 42AC 4VI	FibreGuard	☰ ☱ ☲ ☳ ☴ ☵ ☶ ☷	60.000	5	141

Alle Artikel entsprechen **Oeko-Tex-Standard 100** und sind **schwer entflammbar nach BS 5852 – 0** (Zigarettentest).

Farbabweichungen vorbehalten. Stoffe vor Zuschnitt auf Farbe und Ausfall prüfen.

Lichtechtheit: Skala 1–8 / 1 = sehr niedrige Lichtechtheit, 8 = sehr hohe Lichtechtheit

HINWEIS: Bei Chenillegeweben und Velours können im Gebrauch Sitzspiegel (Gebrauchslüster) entstehen. Dieses ist warentypisch, nicht vermeidbar und kein Reklamationsgrund. Möbelstoffe sind generell und auch nicht durch Fleckschutz vor Abfärbung durch Bekleidungstextilien (z. B. Jeans) und Gebrauchsverschmutzungen geschützt.